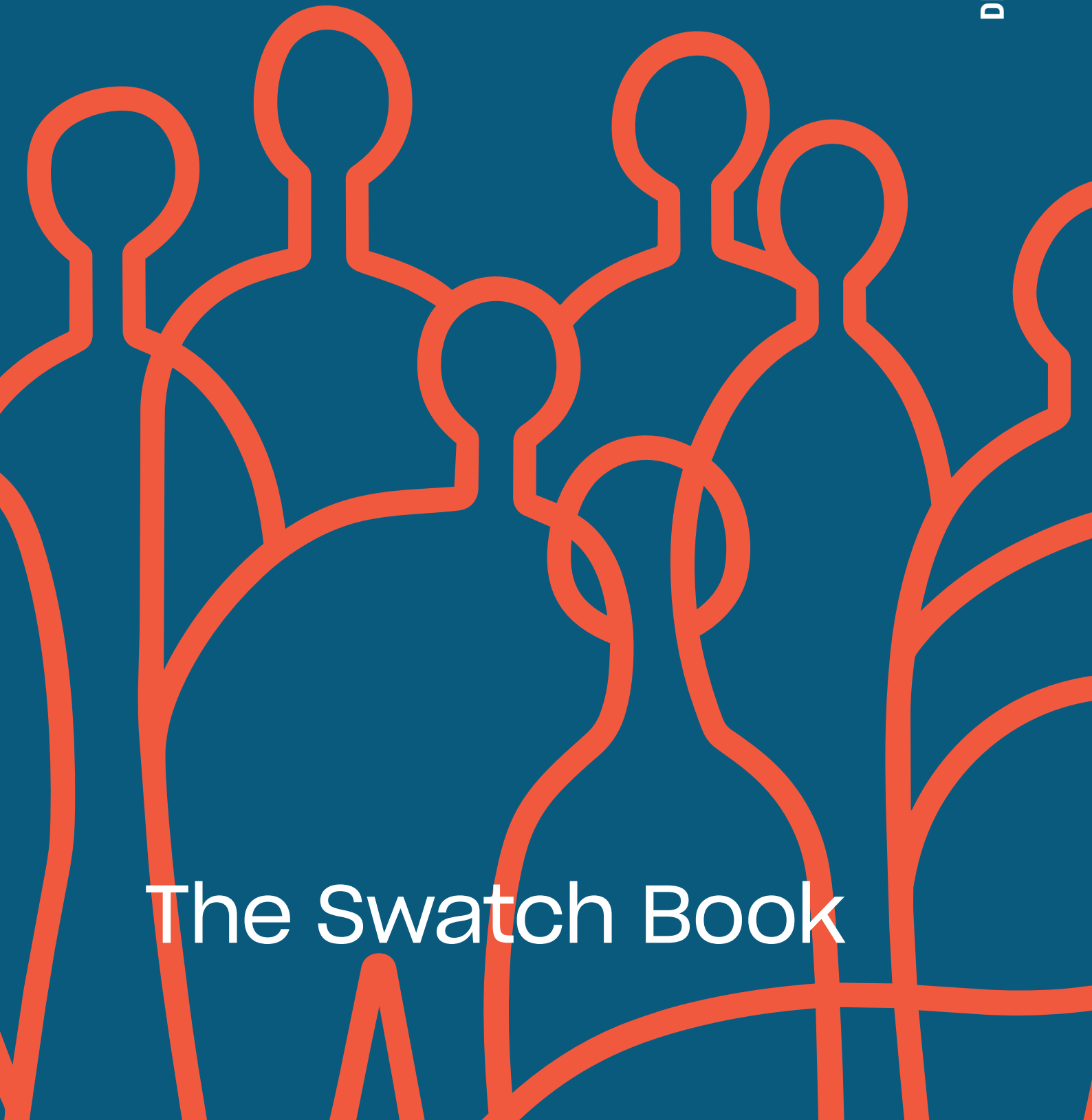


fit interiors

DESIGN AROUND PEOPLE.

The Swatch Book



The Swatch Book

Finiture
Materiali
Colori
Finishes
Materials
Colours

The Swatch Book

Pannelli e laminati / Panels and laminates

Legno / Wood



S172
CORTECCIA



K4410AW
NATIVE OAK LIGHT



A48
ROVERE LIMBURGO MIELE



S073
ST JAMES PARK SHERWOOD



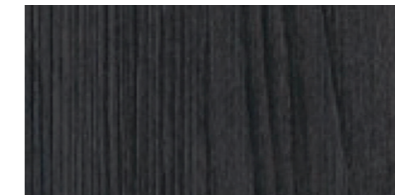
S212
CORTECCIA



LK48
NOCE LEUCA MATRIX



K5413RO
QUERCIA ENDGRAIN COGNAC



4043
NOCE ADIGE



MILLENNIUM BLACK

Cemento / Concrete



44374DP
CEMENTO GRIGIO OPALE



44407DP
CEMENTO PLATINO



44405DP
CEMENTO GRIGIO ARDESIA

The Swatch Book

Pannelli e laminati / Panels and laminates

Metallo / Metal



U005
URBAN IRON

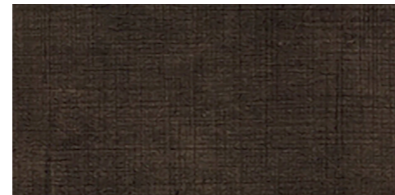
Tessuto e pelle / Fabric and Skin



FA44
KAKI PENELOPE



FA46
GUERRILLA PENELOPE



FA33
MAYA BRONZE PENELOPE

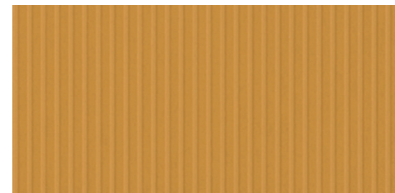
Traccia / Stripe



UB 55
TRACCIA



UB 45
TRACCIA



UB 53
TRACCIA

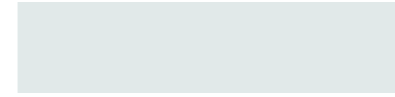


LS71
TRACCIA

The Swatch Book

Pannelli e laminati / Panels and laminates

Tinta unita / Solid Color



WHITE WAX



6577ST
CASHMERE



7063
PASTEL GREEN SU



K512
NATIVE PINK SU



0134
SUNSHINE BS



U321
CHINA RED



D143PS30
GREY



0244
PETROL SU



MATT BLACK WAX

Cassa armadi / Structure lockers



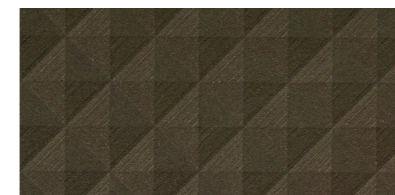
6577ST
CASHMERE



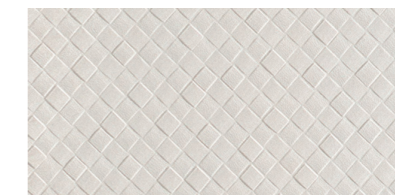
D143PS30
GREY

Finiture tridimensionali / Three-dimensional finishes

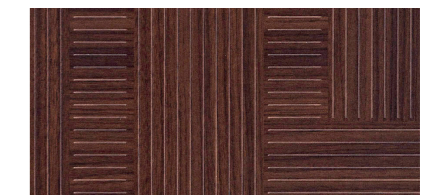
Armadi People T / People T Lockers



FA84
BRONZE CHEOPE



FB45
MOSAICO CLEAR



S195
OGIJIMA JIOMETORI

Cassa armadi / Structure lockers



6577ST
CASHMERE



D143PS30
GREY

The Swatch Book

Pannelli e laminati / Panels and laminates

Finiture metallo / Metal finishes

Armadi Next / Next Lockers



Cassa armadi / Structure lockers



Legno a doghe / Slatted wood

Armadi Futura Wood / Futura Wood Lockers Bancone Reception Opera / Opera Reception Counter



Cassa armadi / Structure lockers



Maniglia in alluminio / Handle in aluminium

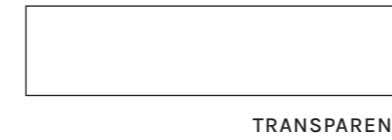


The Swatch Book

Polycarbonato / Polycarbonate

Armadi Collective / Collective Lockers

Anta in polycarbonato / Doors in polycarbonate



Cassa armadi / Structure lockers

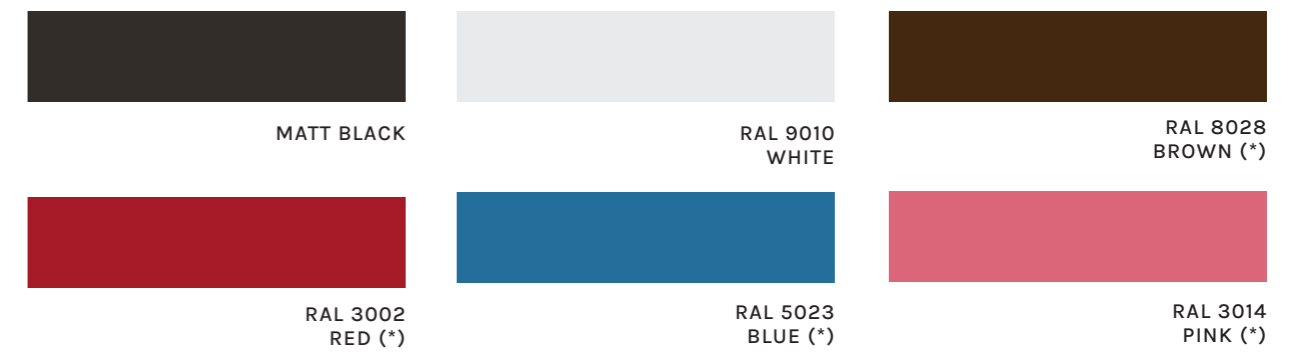


Cassa armadi (ignifuga) / Structure lockers (fire retardant)



Alluminio / Aluminium

Armadi Factory / Factory Lockers Panca Tecno / Tecno Bench



(*) Factory, minimo 15 armadi / Factory, 15 lockers minimum

Cassa armadi / Structure lockers



The Swatch Book

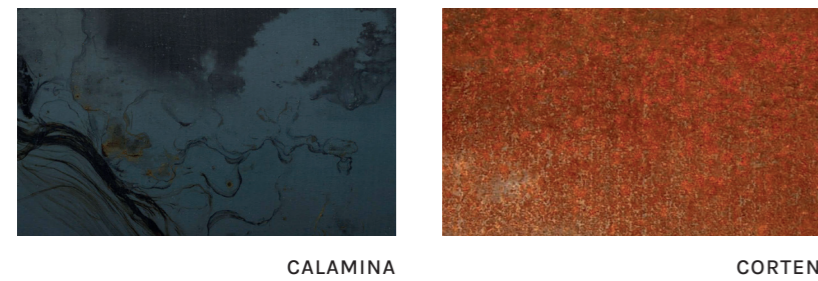
Laminati / Laminates

Bancone Bar Start Up / Start Up Bar Counter



Acciaio / Steel

Bancone Reception Uniko / Uniko Reception Counter



Krion

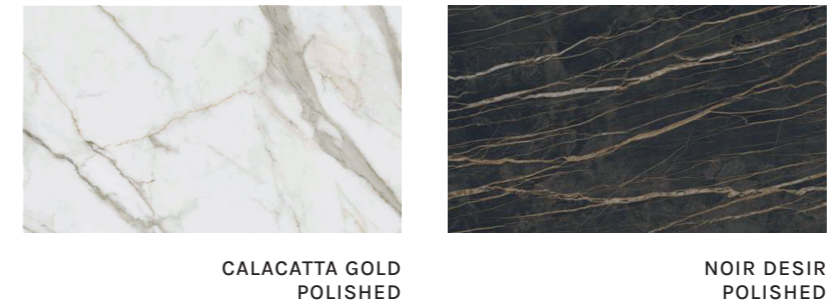
Bancone Reception Uniko / Uniko Reception Counter



The Swatch Book

Ceramica / Ceramics

Bancone Reception Universal / Universal Reception Counter



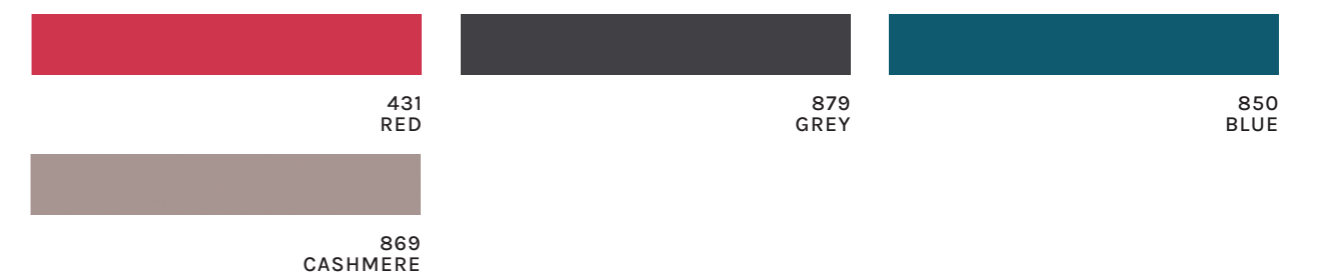
Fenix

Banconi Reception Universal / Universal Reception Counters Banconi Reception Uniko / Uniko Reception Counters Lavabo Simple / Simple Sink



HPL

Box Doccia e Toilet Studio / Showers and Toilet Cubicles Studio



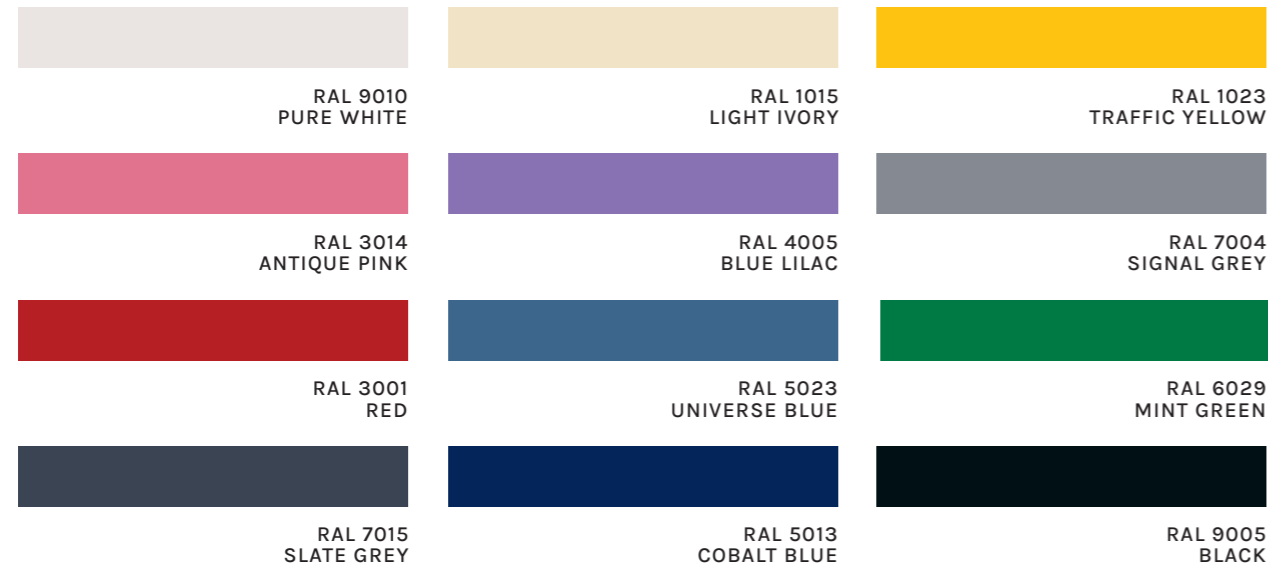
Box Doccia e Toilet Nexus / Showers and Toilet Cubicles Nexus



The Swatch Book

Vetro / Glass

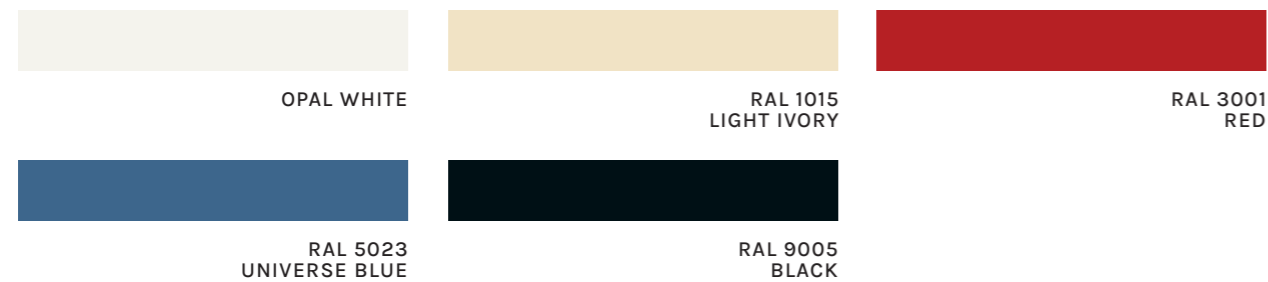
Armadi Etoile / Etoile Lockers



Cassa armadi / Structure lockers



Box Doccia e Toilet Studio / Showers and Toilet Cubicles Studio



The Swatch Book

Ecopelle / Eco-leather



INCA

COMPOSIZIONE / COMPOSITION
88% VINYL / 8% PES / 4% CO

<p>Martindale ≥ 200.000 cicli / cycles</p>	<p>Ignifugo Flame retardant EU: UNI EN ISO 1021 Part 1 & Part 2 IT: Classe 1IM - UNI 9175 UK: BS 5852 Source 0 & 1 US: CAL TB 117 US: FMVSS 302</p>	<p>Resistente all'acetone Acetone resistant UNI 4818 - P.16</p>
<p>Resistenza salinità (acqua marina) Salinity resistant (sea water) UNI EN ISO 105-E02:2013</p>	<p>Resistente alla candeggina Bleach-resistant UNI EN ISO 105-X12:2003 Impiego 5% ipoclorite di sodio Use of 5% sodium hypochlorite</p>	<p>Resistente all'alcol Alcohol resistant UNI EN ISO 105-X12:2003 Impiego di alcool Use of alcohol</p>
<p>Resistenza all'urina Urine resistant UNI EN ISO 105-X12:2003 Impiego di urea 1,2 gr/lt Use of urea 1.2 g/L</p>	<p>Accelerazione dell'usura Resistenza all'idrolisi Accelerated ageing Hydrolysis resistance UNI EN ISO 1419/C-1995E Tropical & Jungle test</p>	<p>Prova allo xeno Xenon test UNI EN ISO 4892-2 B1 outdoor UNI EN ISO 4892-2 B2 indoor</p>



Gruppo P&G
è un'azienda
certificata FSC™

Azienda certificata FSC-C210671
Acquistando prodotti certificati FSC™
contribuisci a prenderti cura delle
foreste del mondo (www.fsc.org).



Gruppo P&G
is an FSC™
certified company

Certified company FSC-C210671
By purchasing FSC™ certified products,
you are helping to take care of the world's
forests (www.fsc.org)

Headquarter

Gruppo P&G srl
Via Emilia, n.3916
47020 Longiano (FC), Italy
tel. (+39) 0547 58746
info@gruppopeg.com

follow us



fit
interiors

furniture for gyms,
health and golf clubs,
spa&wellness, offices, hotel,
medical and corporate

www.fitinteriors.com